

DIAGNOSTIC MAMMOGRAPHY

What is a diagnostic mammogram??

A diagnostic mammogram uses low-dose x-rays to take pictures of your breast.

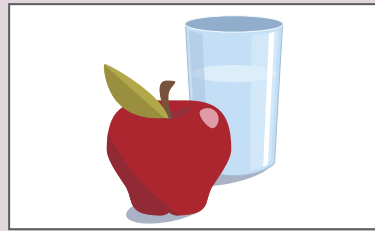
Your breast doctor uses these pictures to see whether findings on your screening mammogram are benign (non-cancer) or cancer. A diagnostic mammogram is also used to see if a breast symptom is related to breast cancer.

PREPARATION

1. Before your appointment, keep to your daily routine:



Take all your pills as you normally do.

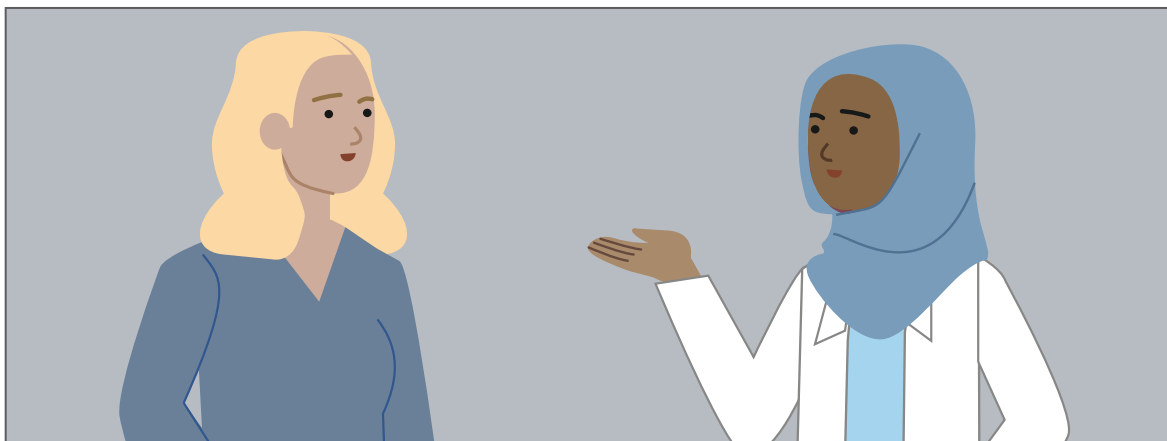


Eat and drink normally.

NO

Do not use deodorant, antiperspirant, perfume, lotion or powder under your armpits or on your breasts on the day of exam.

2. When you arrive for your appointment, tell your care team:

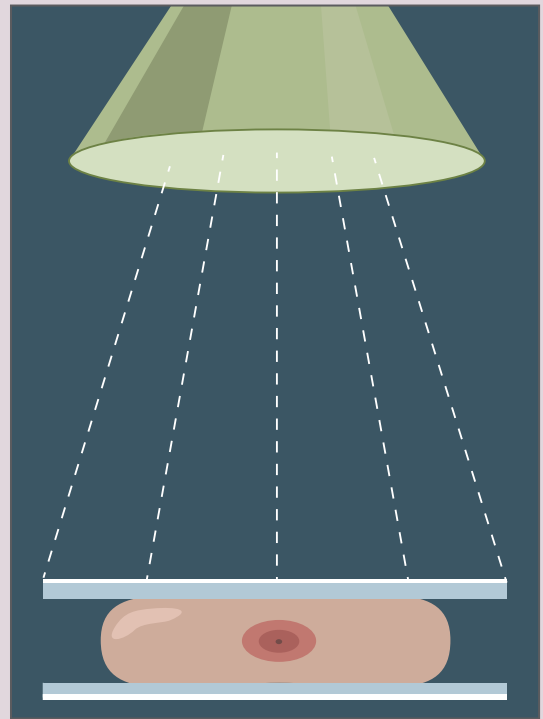


- If you have physical limitations that don't allow you to sit up, stand, lift your arms or dress yourself
- If you have breast implants
- If you have any issues of modesty
- If you have any other concerns

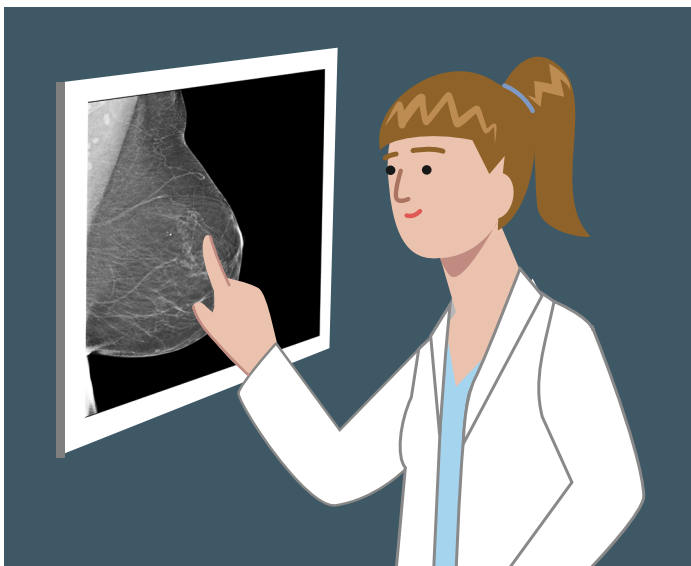
PROCEDURE  ≈ 20 – 30 minutes.



1. You will take off your shirt and bra and change into a hospital gown. You will then stand in front of the X-ray machine with your breast placed on a small platform.



2. A clear plastic plate will press down on your breast for a few seconds. You may feel pressure, but no pain.



3. The staff will take several pictures of your breast.
4. While you wait, your breast doctor will look at your mammograms.
5. You will get your results by the end of the visit.



Contact Boston Breast Diagnostic Center
at 617-553-5300 for questions or concerns.

Convenient Office Hours:
M-Thurs from 7:00 am-5:00 pm
Fri 7:00 am-3:00 pm

BBDC
BOSTON BREAST
DIAGNOSTIC CENTER
www.bostonbdc.com