

SCREENING MAMMOGRAPHY

What is a screening mammogram?

A screening mammogram uses low-dose x-rays to take pictures of your breast.

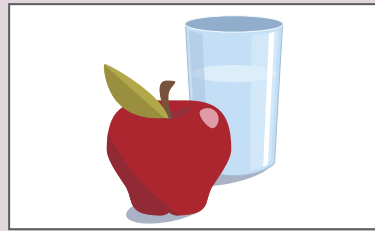
Your breast doctor uses these pictures to detect breast cancer. A screening mammogram can find breast cancer that is too small for a woman or her doctors to feel.

PREPARATION

1. Before your appointment, keep to your daily routine:



Take all your pills as you normally do.

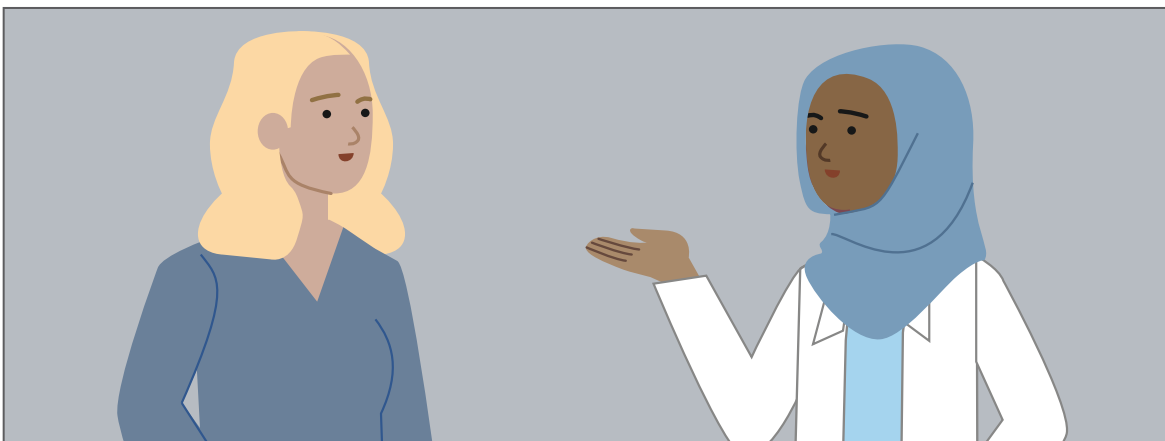


Eat and drink normally.

NO

Do not use deodorant, antiperspirant, perfume, lotion or powder under your armpits or on your breasts on the day of exam.

2. When you arrive for your appointment, tell your care team:

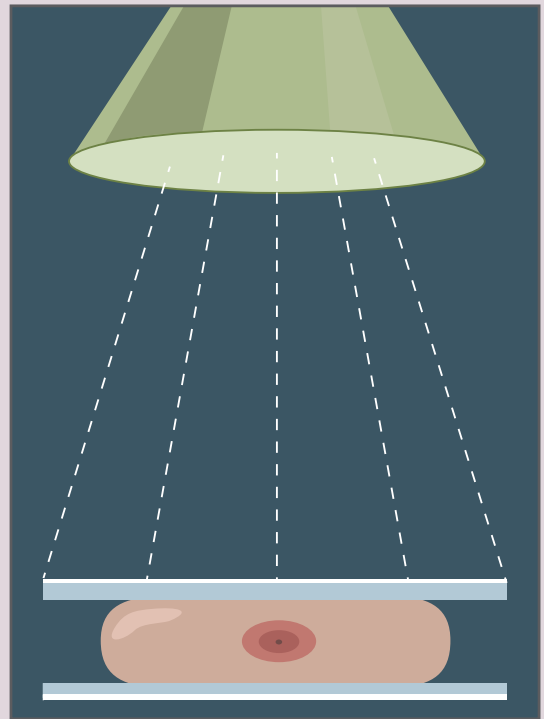


- If you have physical limitations that don't allow you to sit up, stand, lift your arms or dress yourself
- If you have breast implants
- If you have any issues of modesty
- If you have any other concerns

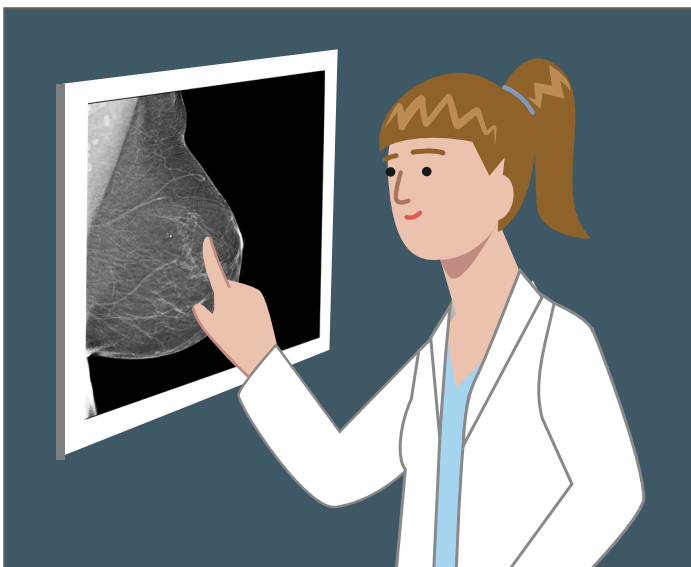
PROCEDURE ≈ 20 – 30 minutes.



1. You will take off your shirt and bra and change into a hospital gown. You will then stand in front of the X-ray machine with your breast placed on a small platform.



2. A clear plastic plate will press down on your breast for a few seconds. You may feel pressure, but no pain.



3. The staff will take several pictures of your breast.
4. Your breast doctor will look at your mammogram while you wait
5. Your breast doctor may request extra mammogram pictures of your breast (called a diagnostic mammogram) or ultrasound to get more information.
6. You will get your exam results before you leave



Contact Boston Breast Diagnostic Center
at 617-553-5300 for questions or concerns.

Convenient Office Hours:
M-Thurs from 7:00 am-5:00 pm
Fri 7:00 am-3:00 pm

BBDC
BOSTON BREAST
DIAGNOSTIC CENTER
www.bostonbdc.com